

Roman Puzzle

PLEASE NOTE
No template is required
for this project

November

This block is a variation of the Roman Stripe using four triangles.

Unfortunately I don't know anything about the history. I assume that it was derived from the Roman Stripe which is found in Amish quilts.

Cutting Instructions

1. Cut one strip each of Fabric 1 & 2 that measures $2\frac{5}{8}$ inches by 19 inches.
2. Cut one strip each of Fabric 3 & 4 that measures $1\frac{7}{8}$ inches by 19 inches.
3. Cut one strip of Fabric 5 that measures $2\frac{1}{4}$ inches by 19 inches.

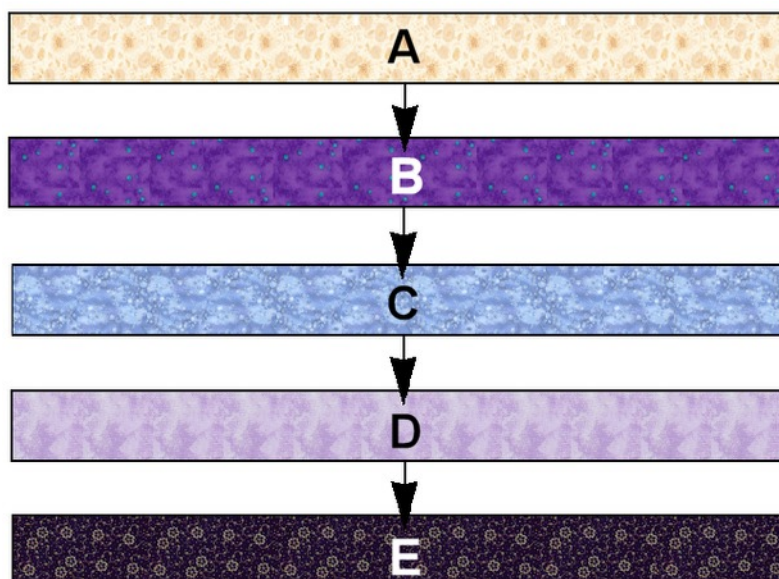


Fabrics

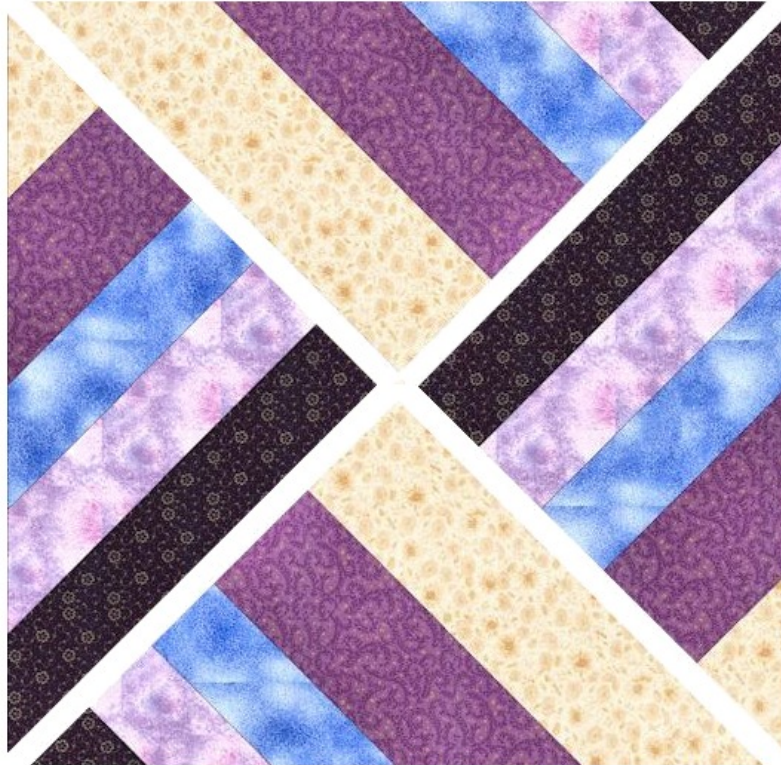
Fabric 1 - Cream
Fabric 2 - Purple
Fabric 3 - Light blue
Fabric 4 - Lilac
Fabric 5 - Black

Assembly Instructions

1. Referring to the diagram below join the five strips in order of 1 to 5.



2. Cut this into two squares which measure $8\frac{3}{4}$ inches by $8\frac{3}{4}$ inches.
3. Now take the two squares and half each one diagonally.
This should give you four triangles.
4. Using the diagram as a guide rotate the triangles and join together as shown. The outside edges will be on the bias, so care must be taken to prevent stretching.



This should give you a $12\frac{1}{2}$ inch square.