

## Swing in the Centre

When printing the templates, ensure that paper size is set to A4, and scale to 100%

APRIL

This block's name is a reference to a square-dancing Formation, where the caller instructs a set of dancers to hold hands and 'swing in the centre'.

The block was called 'Roman Pavement' in the *Chicago Tribune* in the 1930s and has several other names Such as 'Mrs Roosevelt's favourite'.

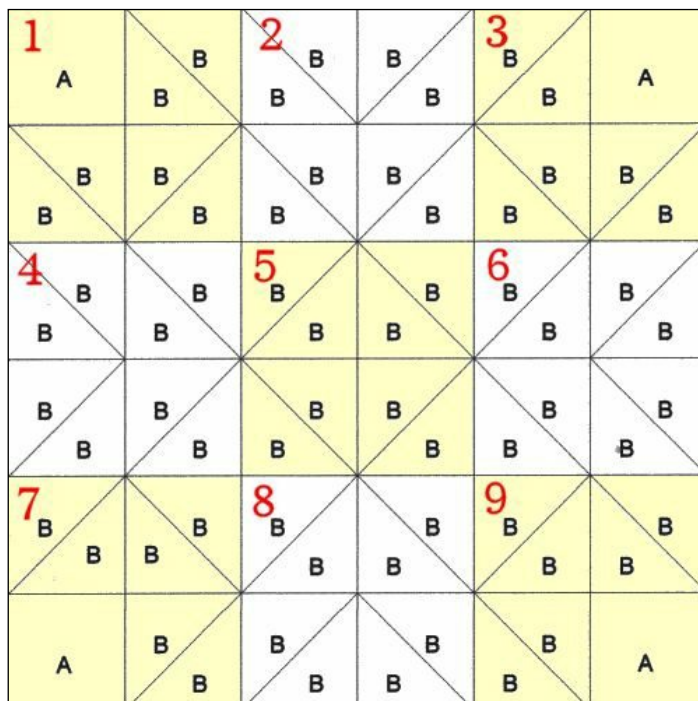
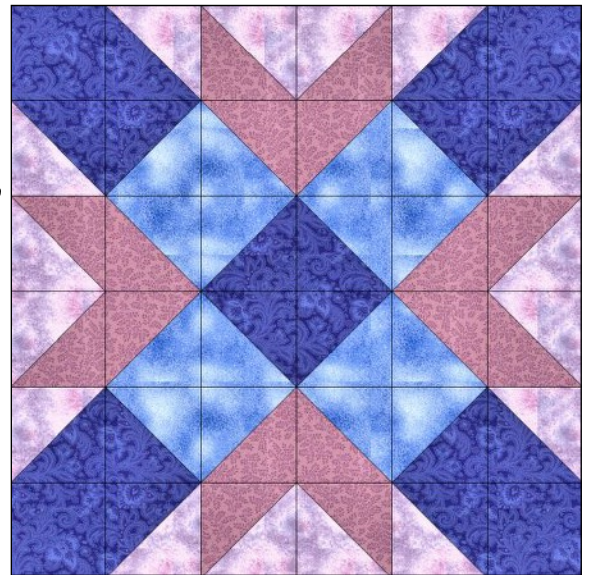
### Cutting Instructions

Choose 4 fabrics. (This can be changed as required.)

Print out Templates. Check that they are the correct size. If not, they have measurements on them to allow for cutting without templates.

If following this route, please remember to add  $\frac{1}{4}$  inch seam allowance.

Cut out the 4 Templates. ( $\frac{1}{4}$  inch allowance is included.)



Fabric 1 - Dark blue  
Fabric 2 - Light blue  
Fabric 3 - Purple  
Fabric 4 - Lilac

#### Fabric 1

Cut 4 of Template A (called 1A)  
Cut 16 of Template B (called 1B)

#### Fabric 2

Cut 16 of Template B (called 2B)

#### Fabric 3

Cut 16 of Template B (called 3B)

### Assembly Instructions

We are making a nine patch block, so we will construct 9 mini blocks first.

Always refer to the diagram of the block for formation.

### 1.

Take one of 1A ,three of 1B , two of 2B and two of 4B.  
Join one of 1B and one of 4B and then join to 1A as diagram.

Next join one of 1B to one of 4B.

Now join one of 1B to one of 2B. Join these two together, consulting diagram.

Next we join these two pieces together.

Make 4 of these and this will give you mini blocks 1,4, 7 and 9.  
Each mini block should be  $4\frac{1}{2}$  inches.

### 2.

#### Mini blocks 2, 4, 6 and 8

Take two of 4B, four of 3B and two of 2B.

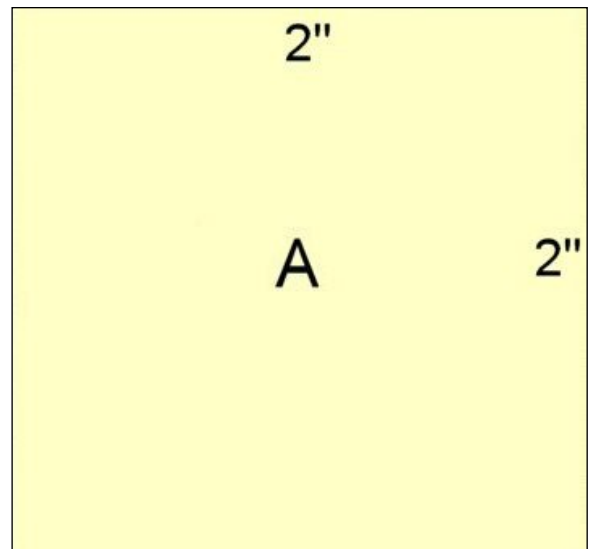
Join one each of 3B and 4B. Do this twice.

Join these two together.

Next join one each of 3B and 4B. Do this twice.

Join these two together.

Next join this to the first piece and you have  
the mini block. Make 4 of these.



### 3.

Take four of 1B and four of 2B.

Join together one each of 1B and 2B. Do this 4 times.

Now join these together to make  $4\frac{1}{2}$  inch square.

Consult diagram for placing.

You should now have 9 mini blocks.

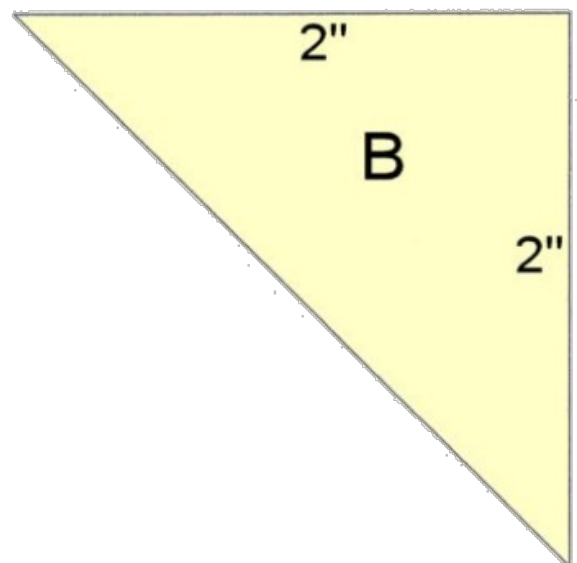
The next step is to join these together.

1. Join 1, 2 and 3 together as shown.
2. Join 4, 5 and 6 together as shown.
3. Join 7, 8 and 9 together as shown.

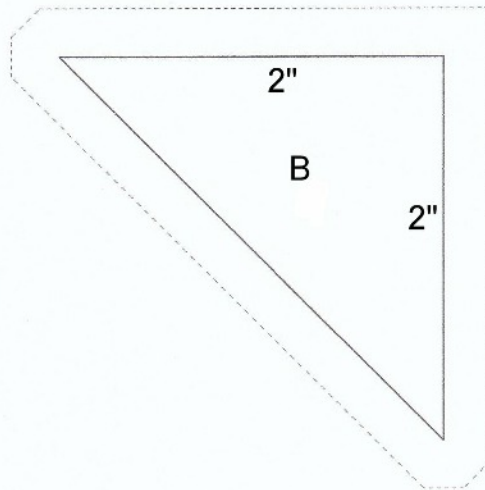
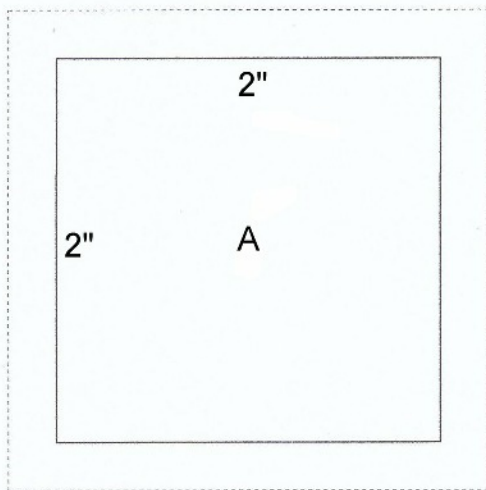
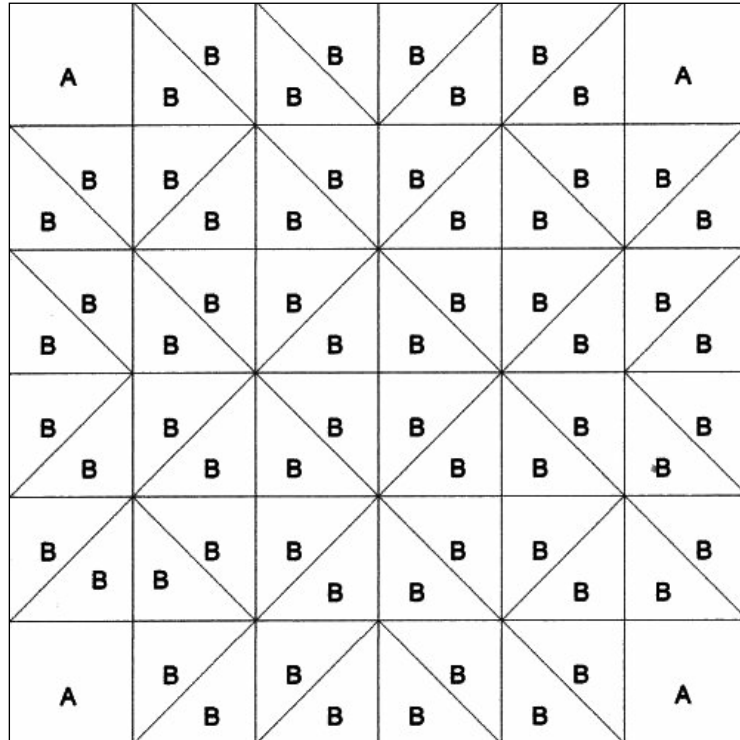
You should now have 3 strips.

Join these together as shown in the diagram

And you will have a  $12\frac{1}{2}$  inch square.



This template should be printed at 100% scale,  
with paper size set to A4



**Swing in the Centre Template**